

CRITIGEN

Lemur™ Platform Specifications

Versatile and Configurable

Lemur™ includes client-side controls/interface, as well as back-end components to supply:

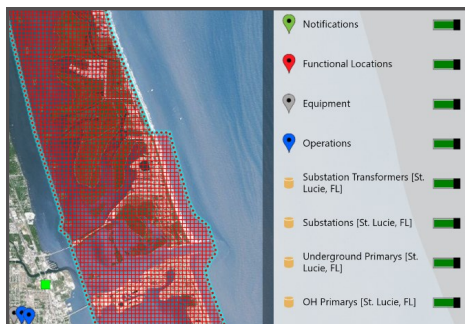
- Geo-enabled data
- Offline data
- Settings
- Forms
- UI layouts
- Data dictionaries

The platform provides a fast, low-risk way to insert real GIS mapping into your own or your preferred vendor's apps.

Programming Skills Not Required

Create Lemur™ maps quickly and without GIS programming skills. Add a new configuration or update existing values to:

- Add new map layers
- Connect business objects to GIS features
- Display features and attributes



Easily configure Lemur™ to suit your needs.

Turn-Key Ready for the Real World

Lemur™ uses real Esri GIS for full compatibility with your corporate GIS, and the Geocache component helps you:

- Manage the GIS data sent to each device
- Prepare data for offline use
- Limit the impact to your enterprise GIS

Critigen's Lemur™ Platform is a productized map control for EAM, packaging Critigen's extensive innovation and integration experience. With the power of business-centric mapping, you can bring systems of record together on a map to provide real workers with the information they need, whenever and wherever the job requires.

Experience Seamless Integration with Lemur™

Lemur™ seamlessly integrates with the applications you already use for day-to-day business, including:

- Asset maintenance and management apps
- Mobile apps
- Field data collection apps
- Assessment apps

Enjoy Scalability and Flexibility with Lemur™

Lemur™ provides future-proof control, configuration, and capability for geo-enabled functionality in your mobile applications. It's available for use in numerous real-world scenarios, such as:

- Connecting your EAM and GIS data quickly
- Adding maps to your custom apps
- Quickly deploying an offline GIS viewer

Benefit from Lemur™-Supported Capabilities

The Lemur™ platform supports the following capabilities on Microsoft® Windows® devices:

- Display SAP objects with selectable markers
- Activate SAP object map layers
- Use customer-defined GIS layers (for online/offline use)
- Launch with flows
- Manage device storage
- Create popups of feature object information from the GIS
- Display the current device location
- Change base maps
- Turn on/off GPS tracking
- Centrally control GIS data distribution

Lemur™ Architecture

Lemur™ components are easily integrated into commercial or custom apps, and middleware components can run in the cloud or on-premises. The platform uses SSL for all communication to ensure the privacy of customer data in transmission and uses encrypted storage for all customer data stored in the cloud.

Component	Description
Map Control	The Map Control slides right into your app, receiving SAP data from it and using its existing capabilities to create, provide status for, and update WOs, NOs, FLs, and EQs.
Bundler	The Bundler allows an administrator to design and configure each app (using data definitions, form definitions, actions/business rules, and validations).
GeoEnabler	The GeoEnabler retrieves business rules from the Bundler, matches business objects to location information, and adds information from the GIS.
GeoCache	The GeoCache manages online/offline data access, download size, management, and sync. It uses bundle settings to query the ArcGIS Server and create cached versions of GIS data.

Bundles and Configuration

Critigen stores user account information, settings, and bundles in the middle tier. Each customer's data is stored in separate, encrypted databases.

Geoenablement

The GeoEnabler service uses business rules defined in the Bundler to attach location information to business objects and can leverage the GIS to do so. The end-user app sends its private AppToken to the GeoEnabler to be authorized to use the service.

Critigen Administration Tool

The Administration tool communicates with middle-tier components over SSL-encrypted channels (requires individual user credentials).

Legend

- Client/partner component
- Lemur™ component
- SSL-encrypted channel
- Non-Lemur™ data transfer
- Lemur™ middle tier

